

HOGGI[®]



CE

BINGO Rehab Pushchair

user manual GB/US

Pacific Rehab Inc
PO Box 5406
Carefree AZ, 85377-5406
Telephone: 888.222.9040
Fax Orders / Inquiries: 480.575.7907

HOGGI[®] - *partnering together to mobilize kids*

User Manual for BINGO Rehab Pushchair

Contents	Page
1 Common Information	
1.1 Preface	2
1.2 Application	2
1.3 Declaration of conformity	2
1.4 Terms of warranty	2
1.5 Servicing and repairs	2
2 Safety Instructions	3
2.1 Meaning of symbols	3
2.2 Common safety instructions	3
3 Delivery and Preparing for Use	6
4 Adjusting and Adaptation Possibilities	10
4.1 Wheel lock	10
4.2 Height adjustment of push handle	10
4.3 Seat depth and seat width	11
4.4 Hip pads	11
4.5 Back height	11
4.6 Recline	12
4.7 Knee Angle	12
4.8 Lower leg length	12
4.9. Footrest angle adjustment	12
4.10 Footrest lock (optional)	13
4.11 Detaching and Attaching the seat unit	13
4.12 Use of seat unit against driving direction	13
4.13 Tilt in space	14
4.14 Detaching wheels with quickrelease	15
4.15 Suspension	15
4.16 Pneumatic tyres	15
5 Accessories	16
5.1 Swivel Lock	16
5.2 Storage Bag	16
5.3 Headrest Pads	17
5.4 Thorax Pads	18
5.5 Lap Belt	19
5.6 Five-point Harness	20
5.7 Foot Straps	21
5.8 Frame Padding	22
5.9 Groin Strap	22
5.10 Fixation Jacket	23
5.11 Chest-Shoulder Harness	24
5.12 Abduction Block	25
5.13 Grap Rail with upholstery	25
5.14 Therapy Tray	25
5.15 Winter Warmer	26
5.16 Rain Cape	26
5.17 Canopy	27
5.18 Attendant brake	27
5.19 Ankle huger	28
6 Transportation	28
6.1 In the Trunk of a Car	28
6.2 Using BINGO Rehab Pushchair for Bus Transport	29
7 Maintenance	29
8 Technical Data	30

1 Common Information

1.1 Preface

Thank you for selecting the BINGO Rehab Puschchair. We have designed this high-quality product to make your life safer and easier, and we've included this manual to help you use and care for it.

Please read the following instructions to make sure you use this product as recommended. If

you have any further questions, or if you have any problems, please contact your healthcare provider.

We hope that BINGO meets your expectations.

The design, as described in these Instructions for use, are subject to technical alterations without notice.

1.2 Application

Rehab pushchairs, paediatric postural positioning systems or strollers are appropriate for individuals requiring mobility assistance.

Assistance may be required due to:

- atypical muscle tone;
- loss of limbs;
- joint instability;
- joint contractures;
- joint defects;
- general weakness.

1.3 Declaration of Conformity

HOGGI® GmbH as manufacturer with sole responsibility declares that the BINGO Rehab Pushchair conforms to the requirements of the 93/42/EEC Guidelines.

1.4 Terms of Warranty

Warranty applies only when the product is used according to the specified conditions and for the intended purposes, following all manufacturer's recommendations.

1.5 Service and Repairs

Service and repairs on the BINGO should only be carried out by authorized HOGGI dealers. Should any problems arise, please contact the dealer who supplied your BINGO. Authorized dealers only fit original HOGGI spare parts.



For repair and service, the following tools are required:
Allen wrench, sizes 3 mm, 4 mm, 5 mm and 6 mm;
wrench, sizes 10 mm, 13 mm, 19 mm.

US Distributor:

Pacific Rehab Inc
PO Box 5406
Carefree AZ, 85377-5406
Telephone: 888.222.9040
Fax Orders / Inquiries: 480.575.7907

2 Safety instructions

2.1 Meaning of symbols



Caution!
Warning of possible danger of accident and injury. Warning of possible technical damage.



Information!
about use of product.



Information!
for service-personnel.



Attention!
Read manual before use!

2.2 Common safety instructions



Read manual completely before use!
Familiarize yourself with handling and functions of the product before use and practice the handling.

You are responsible for the safety of your child. The safety of your child could be affected if you do not follow the instructions of this manual. Nevertheless not all possible circumstances and unpredictable situations can be covered by this manual. Reason, care and circumspection are not features of the product, they are required of persons, who use the product. The person, who is using the product and its accessories should understand all instructions and should explain them to every person using the product and its accessories.

If instructions are not clear and further explanations become necessary, or if you have further questions please contact your HOGGI dealer.



Strap your child at any time in the pushchair.



HOGGI points out, that any use beside the typical use can be dangerous. The pushchair is not suitable for jogging, running, skating or similar activities. Swivelling front wheels tend to wobble at higher speed, which can cause a sudden stop and tip over of the pushchair. Use the pushchair only at regular walking speed.

Under no circumstances leave the handle bar while pushing and never push the chair away.



The pushchair should only be used on solid level ground.



Use your pushchair as intended by the manufacturer. For instance, do not drive into obstacles (including steps, curbs) without braking.



To clear obstacles such as steps and curbs, tilt the pushchair onto the rear wheels (pull it backwards to go up; to descend, slowly lower it forward).



Do not go up or down stairs without the assistance of another person. If devices such as ramps or elevators are available, please use them. If they are not available, then the pushchair should be carried over the obstacle by two persons.



Pay particular attention when on slopes and inclines to prevent

- the child from falling out of the pushchair;
- the pushchair from tipping over;
- the pushchair from rolling away.



If you have to park on a slope, face the pushchair uphill with the brakes engaged and ensure that the seat is in the upright position. There is a risk that the pushchair might tip over backwards if the seat is the reclined position.



Before leaving the pushchair and before getting into and out of it, always lock the wheel locks.



Do not stand on the footplate when getting into or out of the pushchair



Only lift the pushchair by parts that are solidly attached:

- front frame tube above the front wheels;
- rear axle;
- push handles / pushbar.



When your child reaches for objects in front, to the side or behind the pushchair, be sure that he/she does not lean out of the pushchair too far since the shift in the center of gravity might cause the pushchair to tilt or tip over.



The handling of the pushchair is strongly influenced by tyre pressure. Correctly inflate tyres considerably improve its maneuverability. The air pressure should be at least 2 bar (200 kPa resp. 29 PSI).



Please be aware that with certain footrest settings the footrest can collide with the caster wheels.



Please keep packaging material away from children. Plastic packaging presents the danger of suffocation.



Never leave your child unattended in the pushchair even when they are strapped in and the brakes engaged.



Before using the pushchair, both folding guards and the seat must be firmly locked in place.



Static stability is at 18° inclination. Attaching heavy bags or other weight to the push handles can adversely affect stability.



The maximum weight that can be carried in the storage bags is 5 kg. Trays must not be loaded with objects heavier than 5 kg.



The pushchair is only intended to carry one child at a time.



The maximum load for the BINGO street frame is 50 kg.
The maximum load for the BINGO seat unit is 35 kg.



Accessories and add-ons reduce the maximum load proportionately.

Attention!

We recommend that, wherever and whenever possible, users transfer to the seats installed in the motor vehicle and use the corresponding vehicle restraint systems, because this is the only way to ensure optimum protection of the passengers in case of an accident.

Your BINGO Rehab Pushchair was successfully tested in accordance with ANSI/RESNA WC/19 and ISO 7176/19 (Crash Test).

It is, however, possible to use your BINGO Rehab Pushchair as a seat in a motor vehicle, if our "Tie down Kit" (article 3201-7300) as well as appropriate restraint systems are used.

This Rehab Pushchair is equipped with back angle and seat tilt adjustment. Before starting you must tilt the backrest until the lock pin (A) locks into the hole (B) in the back plate. Tight the lever (C) well after this adjustment. Using the seat tilt adjustment you must bring the backrest into almost upright position (max. 20°). Observe the specifications under 4.6 and 4.13 in this user manual.



Caution!

Excess strap ends on accessories may be trapped between the two parts of the seat mounting interface and prevent a full engagement of the lock pin. In such a case the seat could fall off the mobility base. Shorten excess strap ends on accessories so that they can not be trapped.

Check by pulling the seat sharply forward that the seat unit is properly engaged. Check that the lock pin is completely engaged. Push in completely, if necessary.



Whenever you change any settings on the BINGO rehab pushchair, make sure that you firmly tighten any screws that have been loosened.

3 Delivery and Preparing for Use



The original package contains the following components:

- outdoor mobility base, folded;
- seating unit, folded;
- back insert
- seat, back, hip and lateral padding;
- instructions for use and list of tools required;
- accessories as ordered.

Carefully remove the transport safety items and packaging material.



To unfold the Pushchair please proceed as follows:

- Lift the pushchair using the black handle grip on the pushbar and unfold it until you can set it on its wheels.



- Press the pushbar backward until the folding guards engage.
- Check both folding guards and engage them if necessary.



- Push the rear wheels (with perforated brake disk!) on the rear axle stub until the quick release engages. Ensure that the wheels are safely fixed on the axle stub by pulling in the opposite direction. If you have a pushchair with rigid front wheels proceed in the same way.



- Release the clamping lever on the backrest and turn the backrest to about 90° against the seat surface.

-
- After setting the backrest to the desired position clamp it firmly with the clamping lever. By pulling the handle of the clamping lever backwards you can rotate it freely and find a optimal position to operate it.



- To overcome the child protection pull the trigger outside first.
- Pull then the trigger upward until the locking device opens the tilt mechanism and swing the seat unit to the desired position.
- Disengage the trigger and swing the seat unit until the locking device locks with a hearable click.



- Swing the knee angle assembly with the footrest to the desired position and fix it with the clamping lever



- Put the back insert into the back base of the backrest and adjust to the desired height by tightening the clamping bolts. If your BINGO is delivered with a canopy accessory , put the adapter fittings on the tubes with the back insert in place. Refer to chapter 5 accessories 5.17 canopy.





- The Allen wrench (size 4 mm) for this and for most other adjustments you can find mounted in the joint slider of the backrest



- In addition to the clamping bolts, the back insert is fixed and secured by two carriage bolts with knurled nuts, which also limit the maximum back height.



- It is recommended to adjust the seat unit to the desired settings before you put on the upholstery parts. See therefore chapter 4 „Adjusting and Adaptation possibilities“
- Put the seat upholstery on the seat so that the corresponding hook & loop straps on seat and upholstery are connected. The rear part of the upholstery should line up with the rear seat edge.



- Put the hip upholsteries on the hip brackets and connect the corresponding hook & loop straps



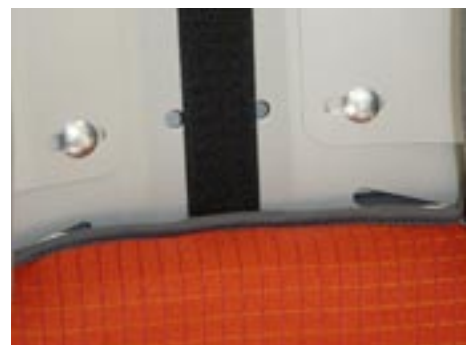
-
- Put the lateral upholsteries on the lateral brackets and connect the corresponding hook & loop straps.



- Pull the back upholstery with the cap onto the back insert.



- Connect the corresponding hook & loop straps to the back insert so that the shoulder belt slots line up with the upper edge (shoulder) of the back upholstery.



- Push the lower end of the back upholstery through the gap between back and seat and attach the back upholstery to the rear seat edge by the corresponding hook & loop straps.





To fold the BINGO rehab pushchair proceed as follows:

- Stand behind the push bar. Pull both folding guards and push the push bar forward.



- After disengaging the folding guards hold the upper part of the push handle and fold it forward until it touches the front frame and the pushchair is lying on the floor



4 Adjusting and Adaptation Possibilities

4.1 Wheel lock

To put the wheel lock on push the wheel lock lever downwards and roll the pushchair slightly back or forward, so that the lock pins can engage in the brake disc. Never use force! This could damage the quickreleases and the wheels could fall off and cause injuries.



To disengage the wheel lock pull the wheel lock lever upwards with your toe.



4.2 Height adjustment of the push handle

The ratchet joints allow adjustment of the push handle to a convenient height. To operate the ratchet joints, push the buttons on the outside of the push handle.

4.3 Seat depth and seat width

After loosening the knurled nuts underneath the seat you can adjust:

- The seat depth by moving the knee angle assembly in or out .
The minimum seat depth of 16 / 21 cm (6 - 8 inches) that you achieve is accomplished by taking out the four foam pads (access from underneath) in the front part of the seat upholstery.



- The seat width by moving the hip pads in or out



Whenever you change any settings on the BINGO rehab pushchair, make sure that you firmly tighten any screws that have been loosened.



4.4 Hip pads

After loosening the button head socket screws the hip pads can be adjusted forward or backward.



Whenever you change any settings on the BINGO rehab pushchair, make sure that you firmly tighten any screws that have been loosened.



4.5 Back height

Loosen the clamping screws at the upper end of the back base and the knurled nuts of the two carriage bolts and adjust to the desired back height. Tighten the bolts firmly.



From a back height of approximately 55 cm for seat size 1 and 66 cm for seat size 2 the back frame has to be placed to the lower position on the back metal sheet.



Whenever you change any settings on the BINGO rehab pushchair, make sure that you firmly tighten any screws that have been loosened.





4.6 Recline

Stand behind the seat first and put the wheel lock on. Secure the back with one hand before you operate the clamping lever with the other hand.



Adjust the back to the desired position and tighten the clamping lever firmly again.



4.7 Knee angle

Put the wheel lock on and stand in front of the seat. Secure footrest and knee angle assembly with one hand before you loosen the clamping lever with the other hand. Swing the footrest to the desired position and tighten the clamping lever firmly again.



4.8 Lower leg length

Put the wheel lock on and stand in front of the seat. Secure the footrest with one hand before you loosen the clamping screws with the other hand. Slide the footrest to the desired position and tighten the clamping screws firmly again.



4.9 Footrest angle adjustment

After loosening the bolts on the left and the right sides of the footrest, the footrest angle can be adjusted approximately up to 10° up or down (dorsal, plantar). Tighten bolts firmly again.

4.10 Footrest lock (optional)

By pulling the release strap the footrest lock is disengaged and the footrest can be folded for better storage. If you swing the footrest down again, it will lock automatically.



4.11 Detaching and attaching the seat unit

For easier transport handling you can dismantle your BINGO in two parts by detaching the seat unit easily from the streetframe. This is also of value, if you want to use the BINGO seat unit on an indoor mobility base.

Before you detach or attach the seat unit always secure the pushchair by putting on the brake.

Detaching

- Stand beside the seat unit.
- Hold the seat with one hand on the front seat edge.
- Push the secondary lock pin (arrow) as shown with the index finger of the other hand and pull the lock pin underneath the seat with thumb and middle finger and slide the seat unit slightly forward.
- Hold now the seat unit on back and front seat edge and lift the seat unit from the trapezium adapter.



Attaching

- Hold the seat unit on back and front seat edge.
- Stand with the seat unit in your hands beside the mobility base.
- Put the seat unit from above and slightly forward from the end position onto the base adapter
- Slide the seat unit backwards until you can hear the lock pin click in place.
- Check by pulling the seat sharply forward that the seat unit is properly engaged.
- Check that the lock pin is completely engaged. Push in completely, if necessary.



Caution!

Excess strap ends on accessories may be trapped between the two parts of the seat mounting interface and prevent a full engagement of the lock pin. In such a case the seat could fall off the mobility base. Shorten excess strap ends on accessories so that they can not be trapped. Check by pulling the seat sharply forward that the seat unit is properly engaged. Check that the lock pin is completely engaged. Push in completely, if necessary.

4.12 Use of the seat unit in a reverse riding direction

The seat unit can also be used in a reverse riding direction. The pushchair can still be folded in this configuration.





Before use in the reverse riding direction the base adapter must be rotated 180°. Remove all four bolts and rotate the base adapter.

Tighten the bolts firmly again.



4.13 Tilt in space

The BINGO seat unit can be tilted up to 45° in driving direction and 40° against driving direction in steps of 8,5° degrees.

- Put on the wheel lock and stand beside the pushchair
- Tighten the clamping lever of the back rest adjustment firmly.
- Secure the seat unit with one hand holding onto the back rest.



- To avoid high resistance for the travel of the trigger release the tilting mechanism by balancing the seat.
- To overcome the child protection pull the trigger outside first.



- Pull then the trigger upward until the locking device opens the tilt mechanism and swing the seat unit to the desired position.
- Disengage the trigger and swing the seat unit until the locking device locks with a hearable click.



Caution!
Check by pulling the seat sharply forward that the locking device is properly engaged. If so, the indicator hole (4) is complete covered by the lever housing.

4.14 Detaching wheels with quickrelease

In order to achieve a most compact folding package the rear wheels of all models and the front wheels of the models with rigid front wheels are detachable by quick release hubs. To detach press the quick release spring towards the middle of the wheel and pull the wheel from the axle.



To attach the wheel push it onto the axle until the quickrelease snaps in automatically. Ensure that the wheel is securely held onto the axle by pulling the wheel without operating the quickrelease. Ensure, that rear wheels (with perforated brake disc) get attached to rear axle!



4.15 Suspension

The BINGO pushchair is equipped with an adjustable suspension. By turning the set screw in, the suspension gets harder, by turning out softer.



Make sure that the suspension is adjusted equally on both sides. The scale in the window of the spring housing offers an orientation.



4.16 Pneumatic tyres

All wheels are equipped with pneumatic tyres. Maintain proper pressure at all times. Notice the air pressure indicated on the tyre.



5 Accessories

All accessories not installed by the manufacturer must be installed by trained technicians.

The following notes on installation are for your information but should be performed by trained technicians.



Straps on accessories are usually extra long to accommodate every option. Excess strap ends on accessories may be trapped between the two parts of the seat mounting interface and prevent a full engagement of the lock pin. In such a case the seat could fall off the mobility base. Shorten excess strap ends on accessories so that they can not be trapped. To prevent strap ends from fraying the cut ends can be melted together with a flame. (eg. cigarette lighter)



5.1 Swivel lock

The swivel lock is mounted by the manufacturer or an authorized dealer.

To lock the swivel lock turn the lock pin by 90° and let it engage in the designated hole in the castor fork.

To open the swivel lock pull the lock pin, turn it by 90° so that it stays in the disengaged position.



After loosening the clamping screw the track can be adjusted with engaged swivel lock.



5.2 Storage bag

The BINGO rehab pushchair can be equipped with a spacious storage bag, which folds with the pushchair.



The maximum weight that can be carried in the storage bags is 5 kg (11 lb).



The storage bag is attached with clips to the cross member of the front frame and with snap fasteners to the rear frame.



If the storage bag gets overloaded the snap fasteners will open but can be put together again easily.



If the seat unit is mounted against driving direction, the storage bag also is mounted in reverse direction.



5.3 Headrest pads

The headrest pads are mounted with carriage bolts and knurled nuts on the back insert.



For an easy mounting and for adjustments open the zipper of the upholstery cap on the rear of the back and turn the rear head upholstery back.

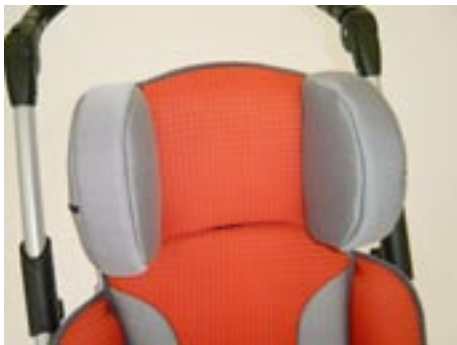




For a rough adjustment of the headrest width the self adhesive foam pads are glued to the left and/or the right of the headrest brackets.

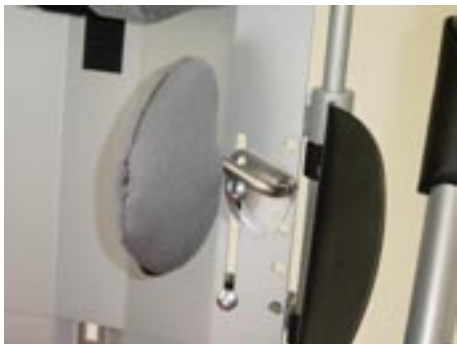


The cover is put on.



After loosening the knurled nuts the headrest pads can be moved in or out for a fine width adjustment.

The height adjustment is realized by adjustment of the back insert.



5.4 Trunk pads

The trunk pads are mounted to the back with back upholstery removed.

The set of holes in the back base and the back insert must be in line. Eventually the height of the backrest has to be adjusted accordingly.

The height adjustment is made through the holes chosen.



After loosening the wing nut the trunk pad width can be adjusted by swinging the crank from horizontal to vertical.

After reaching the desired position and tightening the wing nuts the back upholstery is pushed underneath the trunk pads.

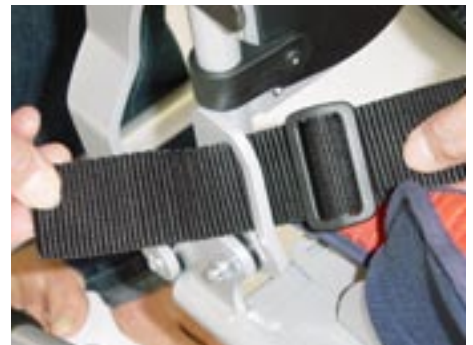


The angle of the trunk pad is fixed by tightening the clamping screw underneath the trunk pad cover.



5.5 Lap belt

On each end of the lap belt you can find pre mounted triglides, which are passed by the belt only once.
The length of the free belt ends determine the length of the complete lap belt.
Pass the free belt ends through the designated slots in the lower part of the back base.



Then thread the belt ends once again through the triglides.



Open the lap belt by pushing the red key on the buckle.

The lap belt can be adjusted by pulling the belt end next to the buckle.





5.6 Five point harness

The five point harness should be installed by authorized dealers or trained technicians.

Take the seat upholstery off first. Loosen all the carriage bolts of the hip pads. Pull out the seat plate completely to get easy access to the set of rectangular slots in the seat plate underneath the hook strap. Choose one of them according to the desired seat depth and slot it with a cutter. The position should be close to the body but not underneath the bottom. Thread the strap from above through the slot and between seatplate and seat base to the rear edge of the seat plate. Place the thickened end of the strap right to this edge so that the strap is firmly secured after tightening the bolts. Put the seat plate and the hip pads to the desired position and tighten the carriage bolts.

Put the seat upholstery back again and thread the other end of the strap through the slot in the seat upholstery.

To attach the strap to the buckle proceed as described in 5.5 lap belt.



Lead the shoulder straps together with the pad straps through the designated slots in the back insert



Fix the shoulder straps to the slots in the back base as described in 5.5 lap belt

Tie the pad straps together.



The shoulder straps should be adjusted in a way that the housing of the length adjusters rest on the shoulder padding.

Mount the lap strap ends of the five point harness as described in 5.5. lap belt and preadjust them roughly.



To take the five point harness off proceed as follows:

- Press the red key on the buckle



- Press the keys of the length adjusters and pull the strap out so that approx 5 cm (2 inches) of the strap end remains.
- Create wide loops which allow for the arms of your child to move out of the harness easily.
- Lift your child out of the seat



To put the five point harness on proceed as follows:

- Place your child into the seat
- Put the elbow of your child through one of the shoulder strap loops first and then the forearm and hand.
- Proceed with the other arm the same way.
- Put the buckle members one after each other into the buckle.
- Tighten shoulder and lap straps by pulling the strap ends coming out of the length adjuster.



5.7 Foot straps

Thread the foot straps crosswise through the D-rings over the shoe/ foot of your child. The heel should be placed against the heel plate of the footrest. Place the buckle always outward. Pull the free strap end to tighten the foot straps. Press the key on the buckle to open the buckle.





5.8 Frame padding

Fit the frame padding around the pushbar and close the hook & loop strap.
Turn the hook & loop closure down and pull the frame padding down over the folding guard and front frame screw connection.

Before folding the pushchair, lift the padding up until the folding guard is free.



5.9 Groin strap

We recommend you to take the seat off the mobility base to mount the groin strap.
Thread the tensioning straps for the thigh belts (the end with a loop) through the slots on the right and left side in the lower end of the back base.
Thread the free end through the loop and tighten the tensioning strap. Now pull the free ends of the tensioning straps toward the seat padding.



Then thread the tensioning straps into the buckles .

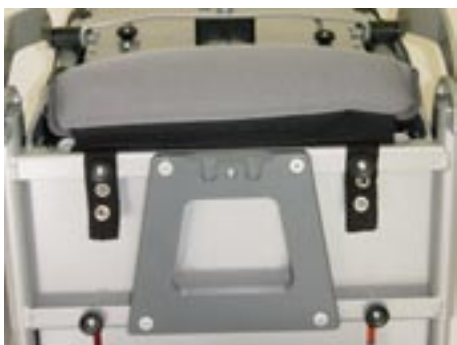


Position the groin strap with the quick-release buckles on the thigh belts pointing downwards on the seat surface.



Caution!

Excess strap ends on accessories may be trapped between the two parts of the seat mounting interface and prevent a full engagement of the lock pin. In such a case the seat could fall off the mobility base. Shorten excess strap ends on accessories so that they can not be trapped.



Thread the attachment straps of the groin strap between seat and back padding, wrap them around the back of the seat edge and attach with carriage bolts and knurled nuts of the hip pads. The set of holes allow a length adjustment.

To put on the groin strap proceed as follows::

- Place your child into the pushchair on the groin strap.
- The part of the thigh belt with the buckle attached should lie on the pelvic bone.
- Insert the male part of the quick-release buckles located on the tensioning straps into the buckles on the thigh belts.
- Tighten the thigh belt by pulling the free end of the strap that comes out of the buckle.
- To disengage the quickrelease buckle, press the key on the buckle.



5.10 Fixation jacket

To attach the fixation jacket straps, rivet (from inside to outside) the six cam-lock buckles to the outside of the back plate.

Thread the shoulder straps of the fixation jacket through the shoulder slots to the rear. The centre "axillary straps" must be threaded at the appropriate height between the back frame tube and back plate.



Thread the lower straps through the slots in the lower part of the back base (see also 5.5 lap belt) to the rear.

Thread all straps through the open cam-lock buckles and clamp in position by closing the hinged cam.



Caution!

Excess strap ends on accessories may be trapped between the two parts of the seat mounting interface and prevent a full engagement of the lock pin. In such a case the seat could fall off the mobility base. Shorten excess strap ends on accessories so that they can not be trapped.

Opening the fixation jacket:

- Open the quick-release buckles on the shoulder part of the fixation jacket
- Pull the zipper down and open the fixation jacket.
- Lift your child out of the seat.



Closing the fixation jacket:

- Place your child into the seat.
- Close the zipper.





- Hold the vest against the child's chest and close the open quickrelease buckles. If required, re-tighten the individual fixation vest straps in the cam-lock buckles.
- If required, re-tighten the individual fixation jacket straps in the cam-lock buckles.



5.11 Chest-shoulder harness

To attach the chest-shoulder harness, rivet (from inside to outside) the four cam-lock buckles to the outside of the back plate. Guide the shoulder straps for the chest-shoulder harness backwards through the designated slots. Thread the lower straps through the slots in the lower part of the back base (see also 5.5 lap belt) to the rear. Alternatively the lower straps can be threaded backwards between seat and seatback through the roll loops which are mounted with the carriage bolts and knurled nuts of the hip pads.



Thread all straps through the open cam-lock buckles and clamp in position by closing the hinged cam.



Caution!

Excess strap ends on accessories may be trapped between the two parts of the seat mounting interface and prevent a full engagement of the lock pin. In such a case the seat could fall off the mobility base. Shorten excess strap ends on accessories so that they can not be trapped.



To put the chest-shoulder harness on:

- Before seating the child in the puschair, release the four cam-lock buckles on the back plate.
- Pull the chest and shoulder pad slightly to the front, open the hinged cams at the lower end of the pad and pull the straps out.
- Place the straps on the sides of the seat.
- Place your child into the seat
- Pull the chest and shoulder pad over the head onto the chest.
- Next, thread the straps into the lower cam-lock buckles of the pad all the way to the stop rivets and close the buckles.
- Then tighten the lower straps from behind.
- Make sure that the chest and shoulder pad is positioned symmetrically on the pelvis and close the buckles on the lower straps.
- Set the upper body of your child upright against the back.
- Finally, tighten the upper straps behind the seat and close the buckles on the upper straps.



The fit and position of the harness is correct when the straps are not touching the child and when the beaded edge of the harness is not in contact with the strap guide slot.

The harness provides the best upper-body support when the strap guide slot is approx. 2-3 cm above the child's shoulder.

5.12 Abduction block

Take off the seat upholstery to mount the clamping set.



Insert the abduction block with its flat link through the slot in the front part of the seat upholstery into the designated rectangular slots (upper and lower!) in the very front of the seat plate. Clamp the abduction block by turning the wing nut of the clamping set.



5.13 Grab rail with upholstery

Insert the longer part of the grab rail into one side of the accessory bracket of the seat unit. Make sure that the snap buttons point towards the front.



Insert the shorter end into the other side of the accessory bracket while pressing the snap button.

Take off the grab rail by both, pressing the snap button and pulling the rail up to remove it.

The cover you can remove simply by opening the zipper.



5.14 Therapy tray

Insert the tray with the vertical round tubes into the accessory brackets on the seating unit. Make sure that the snap buttons point towards the front. Press the snap buttons at the same time. The tray top is adjustable in depth and angle by operating the clamping lever.

The tray can only be used if the seat is mounted facing forward in driving direction.





Trays must not be loaded with objects heavier than 5 kg (11 lb).



5.15 Winter warmer

Zippers allow the upper part of the winter warmer to be opened or removed.

Place the winter warmer in the stroller and tie with the straps to the lower back section and tie the upper straps to the frame of the back insert.



Upper straps to the frame of the back insert.



Lower straps to the lower area of the back base.



5.16 Rain cape

With the zip-fastener open pull the rain cape over the child's head, then unfold the upper end over the backrest and the lower end around the footrest.

5.17 Canopy with rain cover

First attach the canopy adapters to the back frame on the left and right side. See also chapter 3 "Delivery and preparing for use".



Insert the male pins of the canopy into the canopy adapters.



Adjustable ratchet joints are used to set the angle of the canopy.

Spread the canopy and wrap over the backrest of the seat.

Canopy with Rain Cover:

Take the rain cover out of the bag attached to the wrap, unfold the rain cover, pull it over the unfolded canopy and put it over the footrest assembly.



5.18 attendant brake

The BINGO mobility base can be fitted with an attendant brake.

The brake mechanism can be operated with a single lever and a cable switch



or with two independent brake lever.



The attendant brake is designed to be a brake and not a wheel lock for parking. For parking the original wheel lock remains in function.



Adjustments:

The attendant brake set is pre adjusted. Nevertheless, if adjustments become necessary just after installation or after a period of use there are following options:

After loosening the counter nut at the brake cable switch the pre tension of both brake slings can be adjusted simultaneously by the setscrew.

Tighten the counter nut firmly again.



At the exit of each brake housing a cranked set screw leads the brake cable away from the tire of the rear wheel. After loosening the counter nut the pre tension of the individual (left or right) brake can be adjusted.

Tighten the counter nut firmly again and ensure that the crank of the set screw shows towards the rear frame, away from the tire.



By adjusting the setscrews you can achieve an equable braking of the rear wheels.



5.19 ankle huger

Ankle huggers allow a comfortable fixation of the foot joints. They are fixed to anchors on the foot plate.

The heel should be placed against the heel plate of the footrest. The belts are opened/closed and adjusted with velcro straps.



6 Transportation

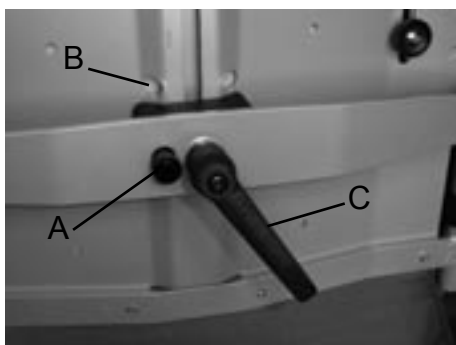
6.1 In the Trunk of a Car

Basically you can store your rehab pushchair in the trunk of your car as well with or without seat unit on as well as with or without wheels on.



The most compact size is achieved by removing the seat unit and wheels by quick release mechanisms and placing them as shown in the mobility base.

6.2 Using BINGO Rehab Pushchair for Bus Transport



Attention!

We recommend that, wherever and whenever possible, users transfer to the seats installed in the motor vehicle and use the corresponding vehicle restraint systems, because this is the only way to ensure optimum protection of the passengers in case of an accident.

Your BINGO Rehab Pushchair was successfully tested in accordance with ANSI/RESNA WC/19 and ISO 7176/19 (Crash Test).

It is, however, possible to use your BINGO Rehab Pushchair as a seat in a motor vehicle, if our "Tie down Kit" (article 3201-7300) as well as appropriate restraint systems are used.

This Rehab Pushchair is equipped with back angle and seat tilt adjustment. Before starting you must tilt the backrest until the lock pin (A) locks into the hole (B) in the back plate. Tight the lever (C) well after this adjustment. Using the seat tilt adjustment you must bring the backrest into almost upright position (max. 20°). Observe the specifications under 4.6 and 4.13 in this user manual.

7 Maintenance

Your BINGO rehab pushchair is CE approved. The manufacturer herewith guarantees that this medical product as a whole conforms to the requirements of 93/42/EEC Guideline.

The rehab pushchair should be checked for correct function before every use.

The items listed in the following table must be checked by the user at the indicated intervals. Failure to carry out these simple checks may lead to problems arising that could invalidate the warranty.

Check	daily	weekly	monthly
Function test of the brake/wheel lock	X		
Check of screw connections		X	
Air pressure (indicated on the side wall of the tyre)		X	
Visual inspection of wearing parts such as wheels and bearings			X
Contamination on bearings			X

Should any defects become obvious, please contact your authorized HOGGI dealer to eliminate them. We also recommend that you have your BINGO serviced by your authorized dealer every twelve months.



Instructions for Cleaning and Maintenance

- Clean all frame components and plastic parts using mild detergents only.
- Padding parts can be washed at 40 °C. If washed in a washing machine, put them in a linen bag or a pillow case.
- In most cases, wiping with a damp cloth is sufficient.
- Do not use your BINGO rehab pushchair in salt water.
- Keep sand or other particles from damaging the wheel bearings.

8 Technical data

Dimensions cm (inches)

and weight kg (lb)	Size 1	Size 2
Mobility base	3201-1000 rigid fr. wheels	3203-1000 rigid fr. wheels
	3202-1000 sw. fr. wheels	3204-1000 sw. fr. wheels
Height push handle	77 -112 (30-44)	77 - 112 (30-44)
Overall width	63 (25)	68 (26.5)
Overall length mobility base rigid fr. wheels	97 (38)	97 (38)
Overall length mobility base sw. fr. wheels	93 (36.6)	93 (36.6)
Wheel diameter front	25 / 19 (9.8 / 7.5)	25 / 19 (9.8 / 7.5)
Wheel diameter rear	25 (9.8)	25 (9.8)
Tilt in space (backwards / forwards)	+45° to -40°	+45° to -40°
Folding size mob.base rig. fr. wh. with wheels	84x63x36 (33x25x14)	84x68x36 (33x26.5x14)
Folding size mob.base rig. fr. wh.without wheels	77x63x23 (30x25x9)	77x68x23 (30x26.5x9)
Folding size mob.base sw. fr.wh. with wheels	83x63x36 (32.6x25x14)	83x68x36 (32.6x26.5x14)
Folding size mob.base sw.fr.wh.without r.wheels	77x63x31 (30x25x12)	77x68x31 (30x26.5x12)
weight	8 kg / 8,5 kg (17.6 / 18.7)	9 kg / 9,5 kg (19.8 / 20.9)
Load capacity mobility base	50 kg (110)	50 kg (110)
Turning radius	128 (50)	138 (54)

Seat unit	3201-2000	3203-2000
Seat depth	16 - 30 (6.3 - 11.8)	21 - 40 (8.2 - 15.7)
Seat width	18 - 30 (7 - 11.8)	23 - 35 (9 - 13.7)
Lower leg length	16 - 34 (6.3 - 13.4)	16 - 39 (6.3 - 15.4)
Backrest height	45 - 63 (17.7 - 25)	54 - 75 (21 - 29.5)
Height of slots for shoulder straps	28 - 46 (11 - 18)	34 - 55 (13 - 21.5)
Recline	80° to 180°	80° to 180°
Weight	7 kg (15.4)	8,5 kg (18.7)
Load capacity seat unit	35 kg (77)	35 (77)



Information!

Accessories and add-ons reduce the remaining load capacity for the passenger proportionally. Mobility bases and seats have different load capacities

Example:

Seat unit (max.35kg/77 lb) + weight of seat unit size 1 (7 kg/15.4 lb) = 42 kg/92.4 lb

Mobility base (max.50 kg/110 lb) - fully loaded seat unit (42 kg/92.4 lb) = 8 kg/17.6 lb for additional accessories.

Hersteller/Manufacturer:

Hoggi GmbH

Taunusstrasse 17

D - 56235 Ransbach-Baumbach

Fon: (+49) 26 23 / 92 499-0 · Fax: (+49) 26 23 / 92 499-99

e-mail: info@hoggi.de · Internet: <http://www.hoggi.de>